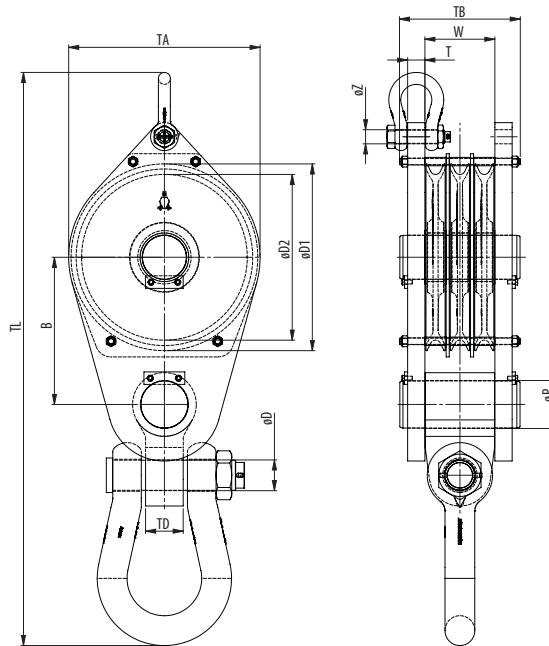


CONSTRUCTION BLOCK WITH SHACKLE

3 SHEAVES



Model No.	WLL (Mtons)	For wire ød (mm)	Dimensions (mm)												Weight (kg)
			øD1	øD2	B	øD	øP	TD	øZ	T	TA	TB	TL	W	
CB 260.16.3.36,5	36,5	13-16	300	260	271	60	80	60	28	30	310	252	1006	148	135
CB 320.19.3.55	55	16-19	365	320	317	73	100	80	31	35	375	286	1219	172	231
CB 355.22.3.73	73	19-22	410	355	359	86	130	110	41	45	420	332	1462	198	374
CB 400.26.3.91	91	19-26	460	400	388	86	130	110	41	45	470	340	1522	198	448
CB 450.28.3.110	110	22-28	515	450	429	98	150	120	45	55	530	385	1746	223	686
CB 528.32.3.127	127	22-32	595	528	469	98	150	120	45	55	610	385	1826	223	823
CB 575.36.3.145	145	26-36	650	575	514	111	170	140	53	60	670	447	2010	266	1138
CB 630.38.3.165	165	26-38	710	630	544	111	170	140	53	60	730	447	2070	266	1205

Minimum Ultimate Strength = 4 x WLL

- Standard delivered with bronze bearing
- The dimensions in this table are indicative only. A drawing will always be submitted prior production and will be the leading document when discussing dimensions.
- Blocks shown here are standard models; inquiries for custom versions are welcome.
- Refer to wire rope manufacturers D/d ratio guideline.



SEE OUR WARNING & SAFETY INFORMATION

